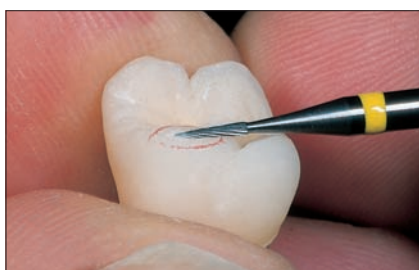


Hartmetallfräser • Tungsten Carbide Cutters • Fraises en carbure de tungstène

SFN Einfachverzahnung superfein • Superfine Plain Cut • Denture simple superfine


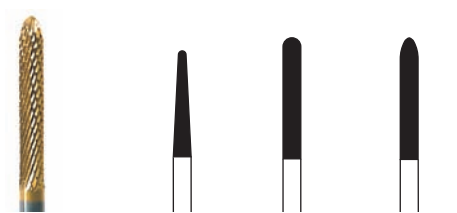


HF138SFN-008



HF079SFN-045

SFTE Superfeine Verzahnung • Superfine Cut • Denture superfine avec revêtement du nitrure de TITANE


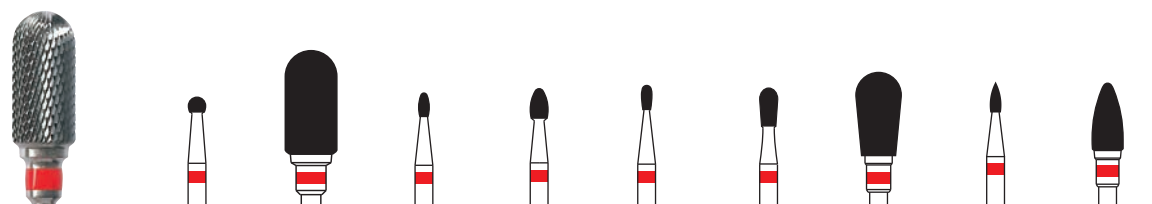
Größe/Size/Taille ø 1/10 mm	023	023	023
L mm	14,0	16,0	16,0
Shank	ISO	ISO	ISO
HP	506 104 ...	201 110 ...	137 110 ...
REF	HF ...	261 SFTE-023	293 SFTE-023
		295 SFTE-023	




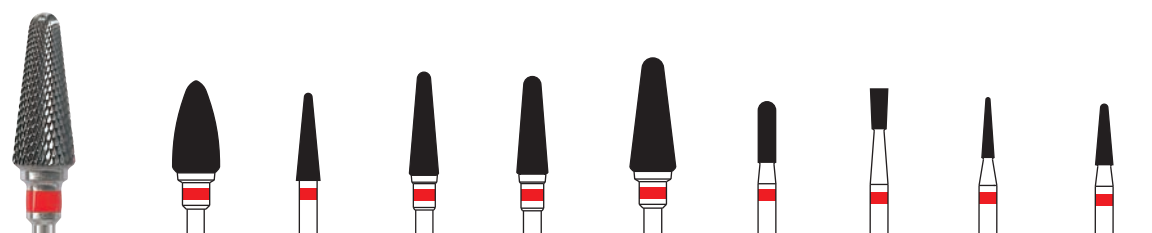
HF261SFTE-023

Titannitrid - beschichtete Fräser
 Titanium-nitride coated Cutters
 Fraises revêtues de nitrure de titane

FE Kreuzverzahnung fein • Fine Cross Cut • Denture croisée fine

Größe/Size/Taille ø 1/10 mm	023	060	014	023	014	023	060	012	040
L mm	2,0	12,5	3,1	3,9	3,2	5,0	11,0	3,5	8,9
Shank	ISO	ISO	ISO	ISO	ISO	ISO	ISO	ISO	ISO
HP	506 104 ...	001 140 ...	143 140 ...	277 140 ...	277 140 ...	237 140 ...	237 140 ...	257 140 ...	257 140 ...
REF	HF ...	071 FE-023	072 FE-060	073 FE-014	073 FE-023	077 FE-014	077 FE-023	077 FE-060	078 FE-012
									078 FE-040

Größe/Size/Taille ø 1/10 mm	060	031	040	045	060	023	023	016	023
L mm	12,2	11,5	14,1	12,9	15,0	8,0	5,3	8,0	8,0
Shank	ISO	ISO	ISO	ISO	ISO	ISO	ISO	ISO	ISO
HP	506 104 ...	257 140 ...	199 140 ...	201 140 ...	200 140 ...	201 140 ...	141 140 ...	225 140 ...	198 140 ...
REF	HF ...	078 FE-060	079 FE-031	079 FE-040	079 FE-045	079 FE-060	129 FE-023	137 FE-023	138 FE-016
									138 FE-023

Bitte Drehzahlbereiche beachten (Drehzahltable - Seite 11.15) / Please observe Recommended speeds (speed chart - page 11.15) / Respecter les vitesses de rotation recommandées (voir à la page 11.15)